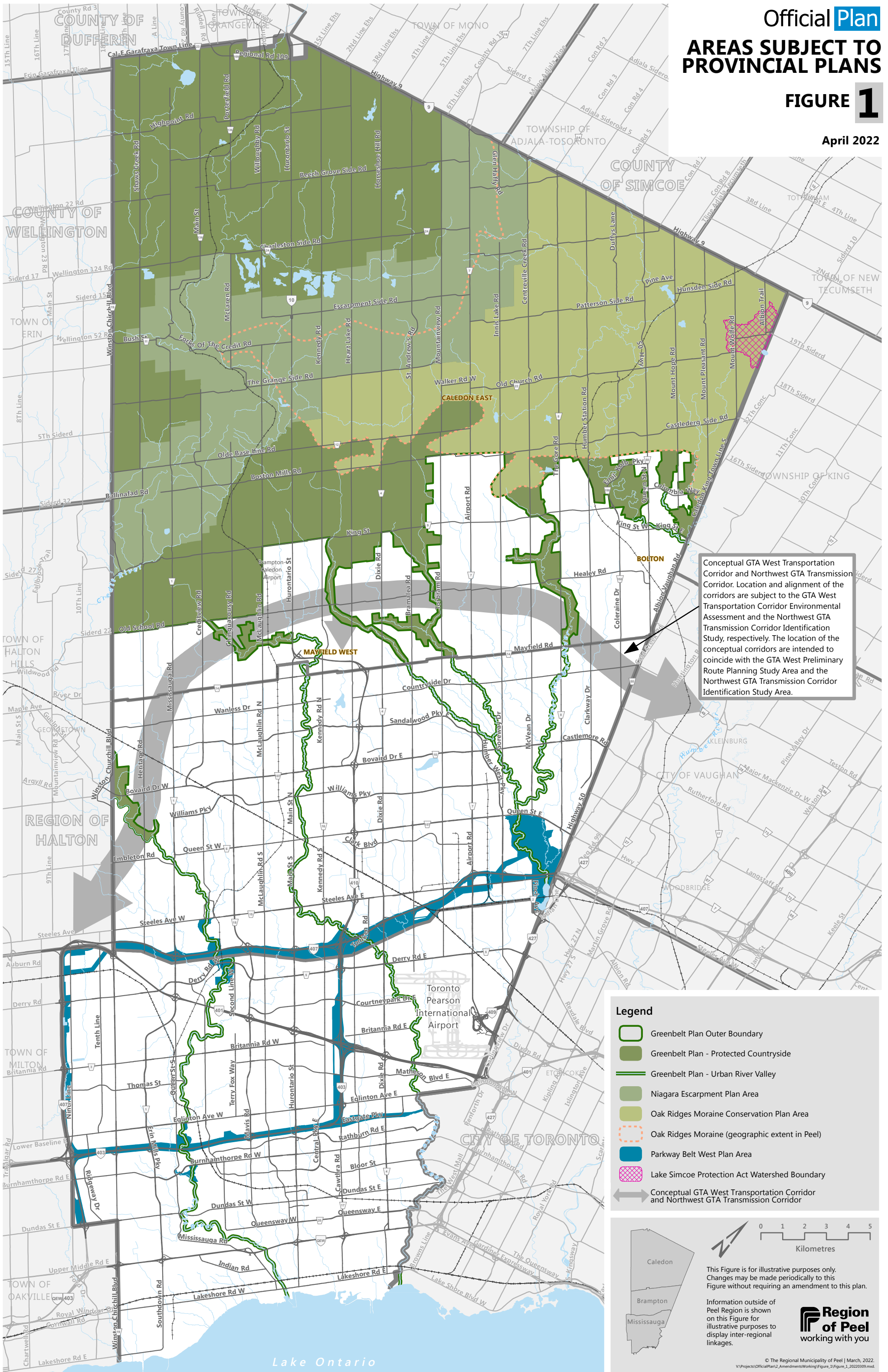


AREAS SUBJECT TO PROVINCIAL PLANS

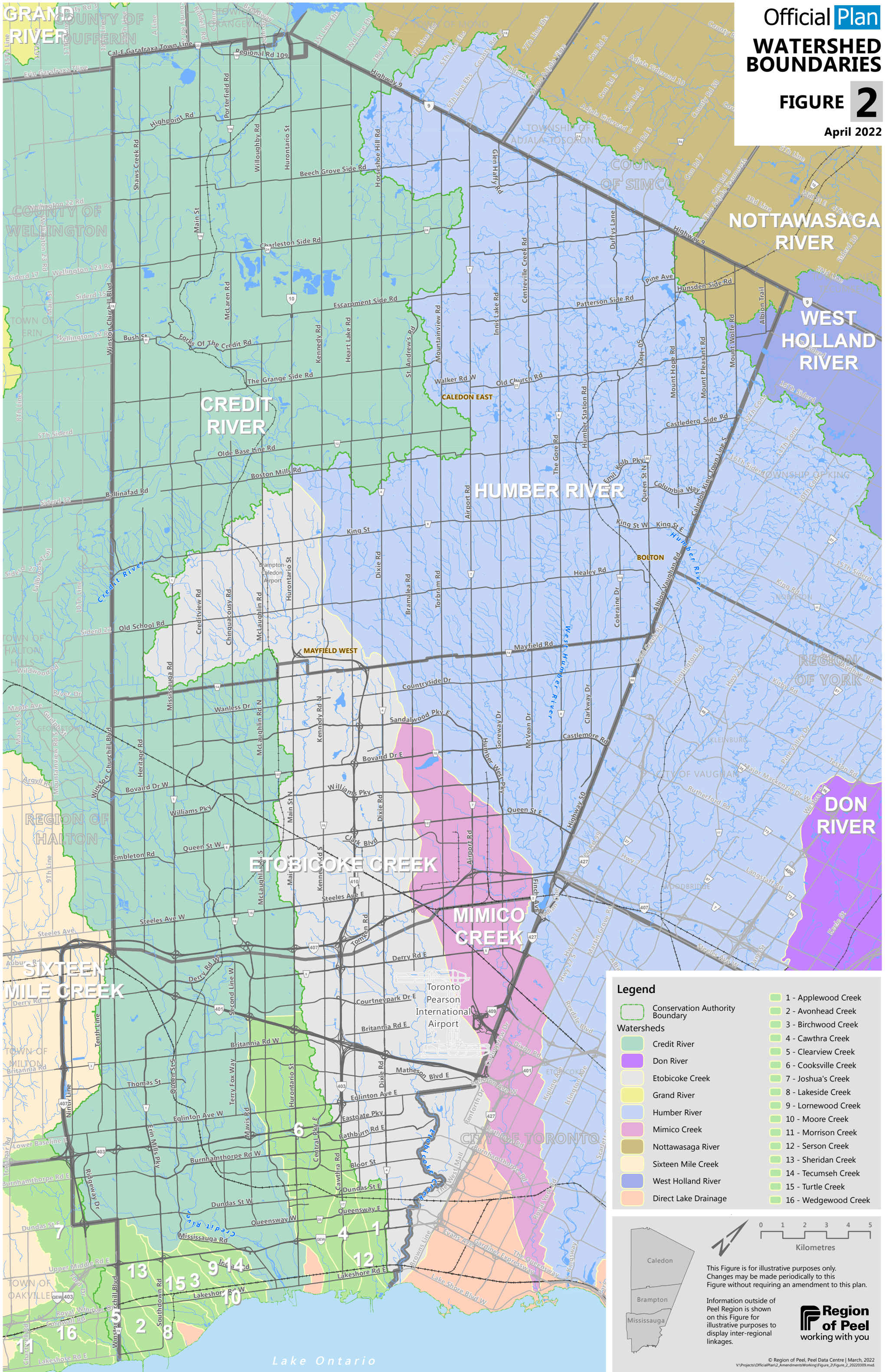
FIGURE 1

April 2022



Official Plan
WATERSHED BOUNDARIES

FIGURE 2
 April 2022



Legend

- Conservation Authority Boundary
- Watersheds
- Credit River
- Don River
- Etobicoke Creek
- Grand River
- Humber River
- Mimico Creek
- Nottawasaga River
- Sixteen Mile Creek
- West Holland River
- Direct Lake Drainage
- 1 - Applewood Creek
- 2 - Avonhead Creek
- 3 - Birchwood Creek
- 4 - Cawthra Creek
- 5 - Clearview Creek
- 6 - Cooksville Creek
- 7 - Joshua's Creek
- 8 - Lakeside Creek
- 9 - Lornewood Creek
- 10 - Moore Creek
- 11 - Morrison Creek
- 12 - Serson Creek
- 13 - Sheridan Creek
- 14 - Tecumseh Creek
- 15 - Turtle Creek
- 16 - Wedgewood Creek

0 1 2 3 4 5
 Kilometres

This Figure is for illustrative purposes only. Changes may be made periodically to this Figure without requiring an amendment to this plan.

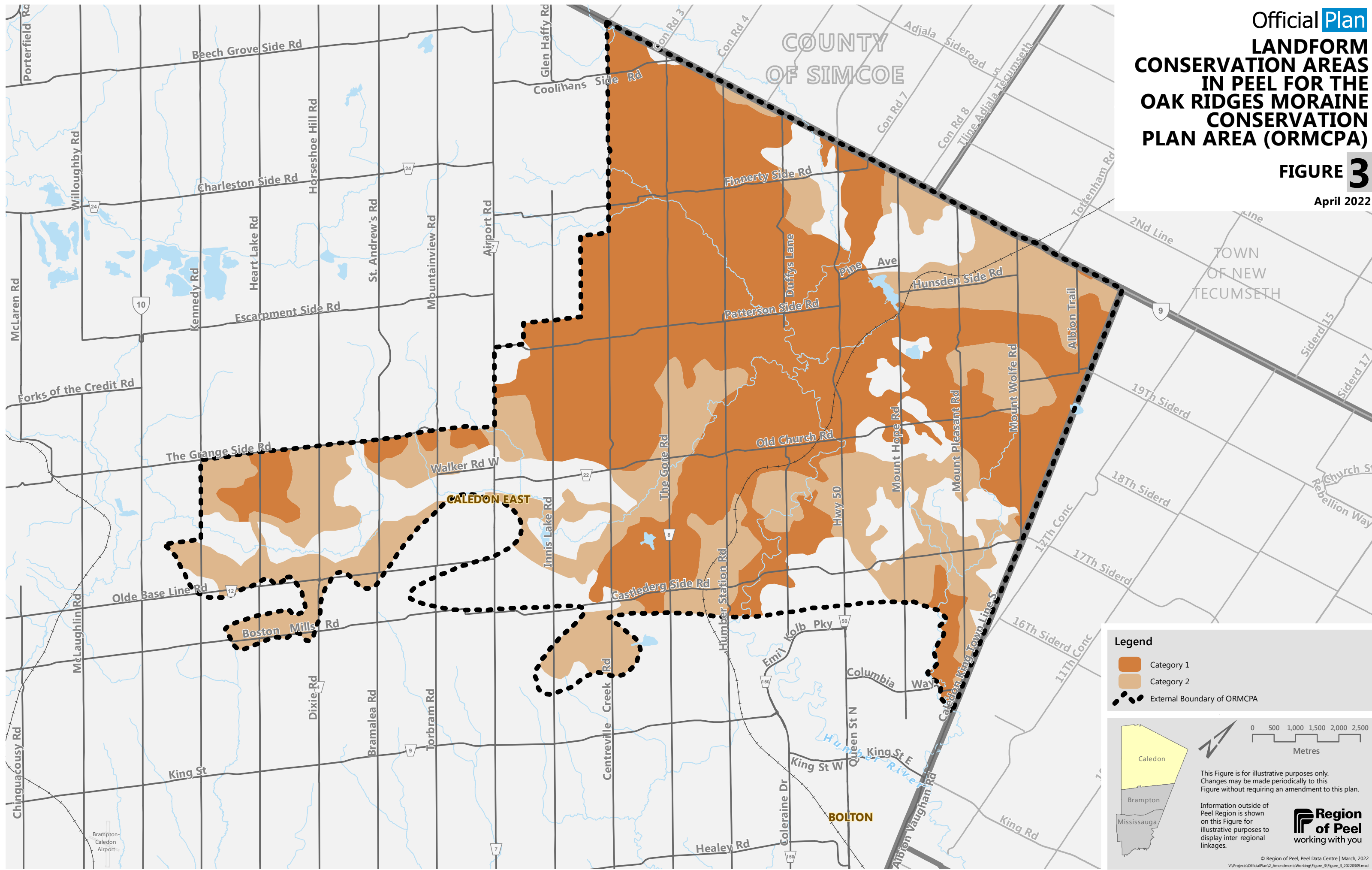
Information outside of Peel Region is shown on this Figure for illustrative purposes to display inter-regional linkages.

Region of Peel
 working with you

Official **Plan**
LANDFORM CONSERVATION AREAS IN PEEL FOR THE OAK RIDGES MORaine CONSERVATION PLAN AREA (ORMCPA)

FIGURE 3

April 2022



Legend

- Category 1
- Category 2
- External Boundary of ORMCPA

Caledon
Brampton
Mississauga

This Figure is for illustrative purposes only. Changes may be made periodically to this Figure without requiring an amendment to this plan.

Information outside of Peel Region is shown on this Figure for illustrative purposes to display inter-regional linkages.

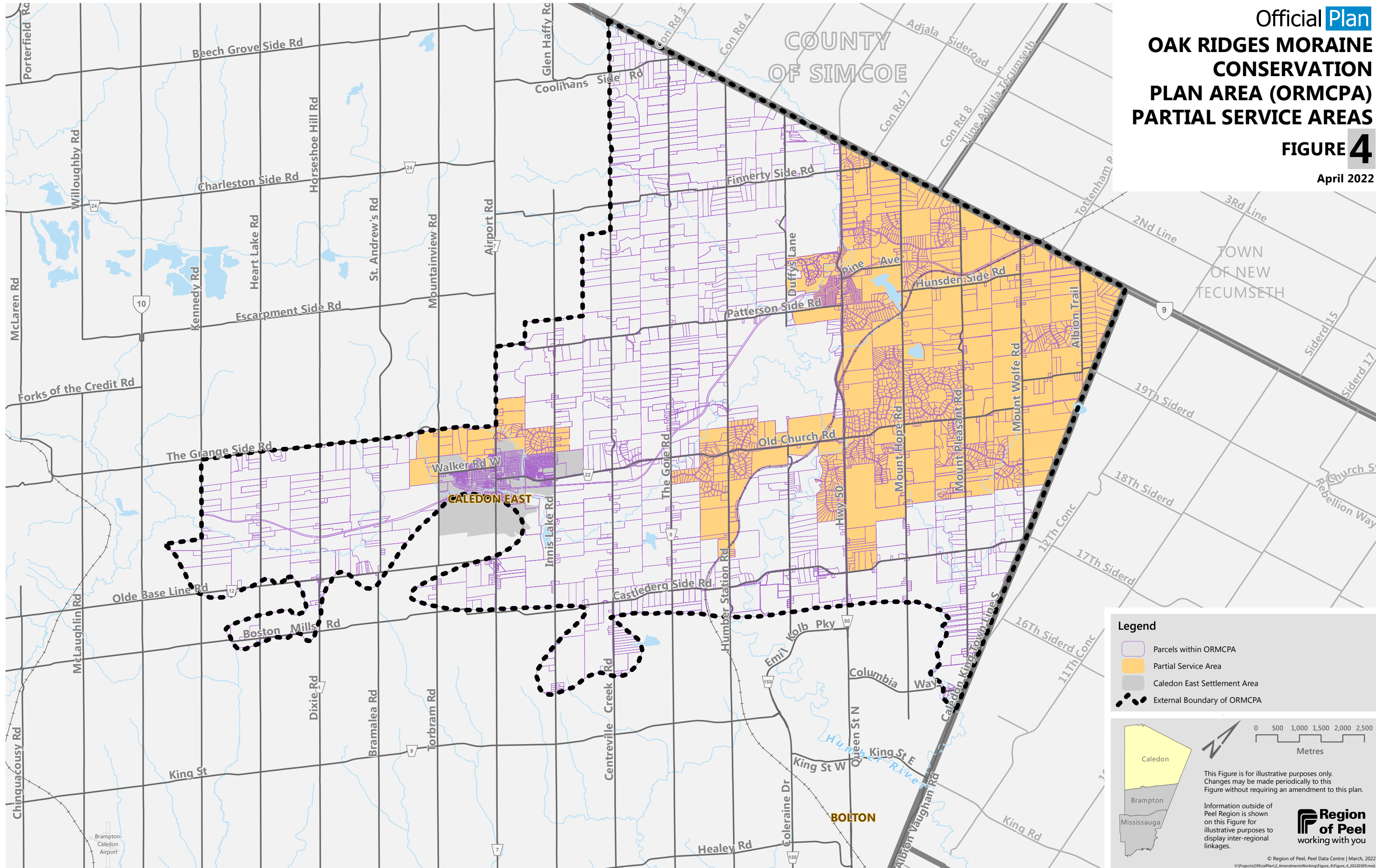
Region of Peel
working with you

© Region of Peel, Peel Data Centre | March, 2022
 V:\Projects\OfficialPlan\2_Amendments\Working\Figure_3\Figure_3_20220309.mxd

Official **Plan**
OAK RIDGES MORaine
CONSERVATION
PLAN AREA (ORMCPA)
PARTIAL SERVICE AREAS

FIGURE 4

April 2022



Legend

- Parcels within ORMCPA
- Partial Service Area
- Caledon East Settlement Area
- External Boundary of ORMCPA

0 500 1,000 1,500 2,000 2,500
 Metres

This Figure is for illustrative purposes only. Changes may be made periodically to this Figure without requiring an amendment to this plan.

Information outside of Peel Region is shown on this Figure for illustrative purposes to display inter-regional linkages.

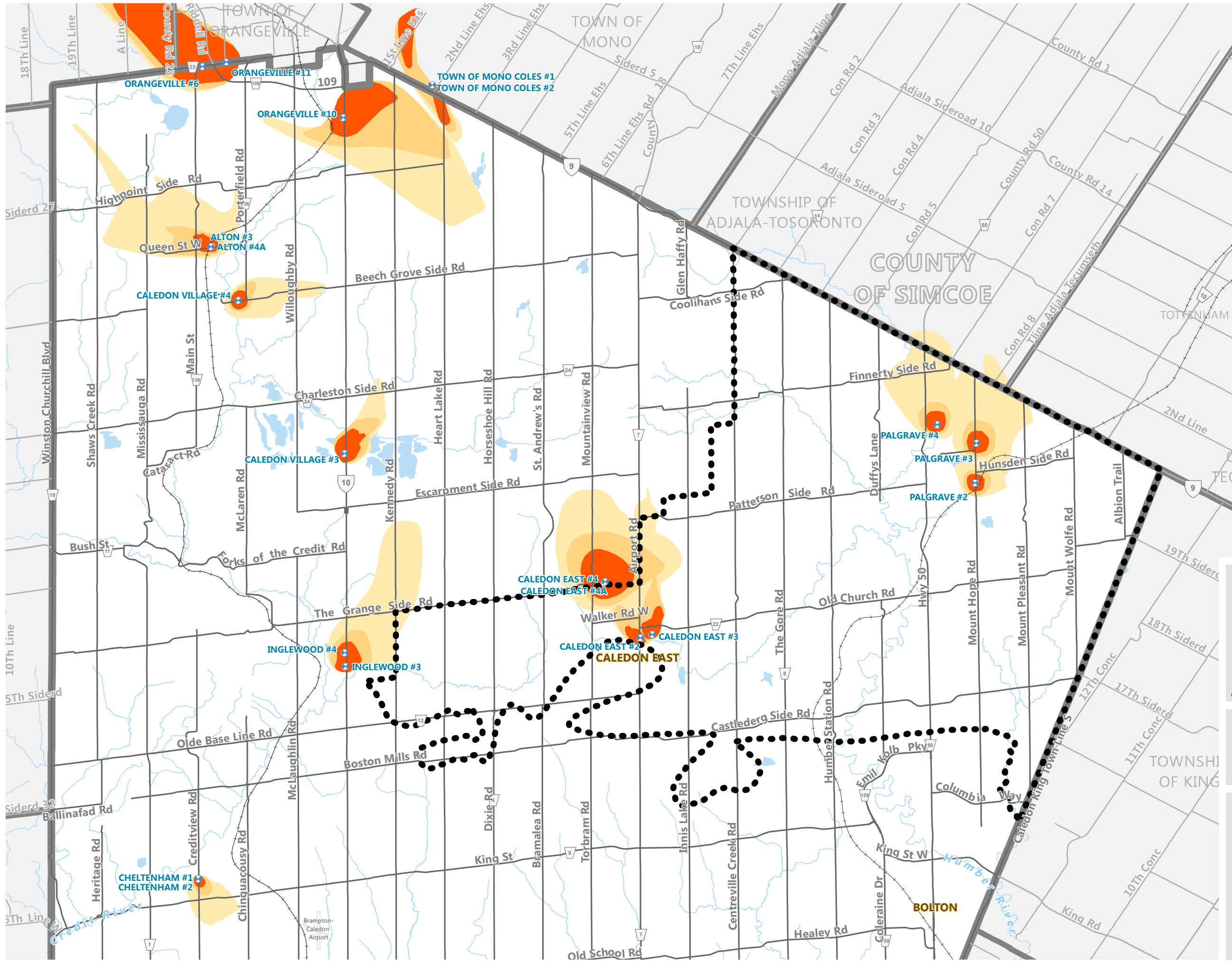
Region of Peel
 working with you

WELLHEAD PROTECTION AREAS IN PEEL FOR THE OAK RIDGES MORaine CONSERVATION PLAN AREA (ORMCPA)

FIGURE 5

April 2022

As modified by the Province on November 4, 2022



Legend

- Wellhead
- 2 Year Time of Travel Zone (WHPA-B)
- 5 Year Time of Travel Zone (WHPA-C)
- 25 Year Time of Travel Zone (WHPA-D)
- External Boundary of ORMCPA

Disclaimer: The Region of Peel is in the process of commissioning new wells, decommissioning existing wells and updating wellhead protection area mapping. This Figure will be updated to reflect the new wellhead protection area mapping as it becomes available subject to and in conjunction with any corresponding amendment to Schedule A-5.

0 1 2 3
Kilometres

This Figure is for illustrative purposes only. Changes may be made periodically to this Figure without requiring an amendment to this plan.

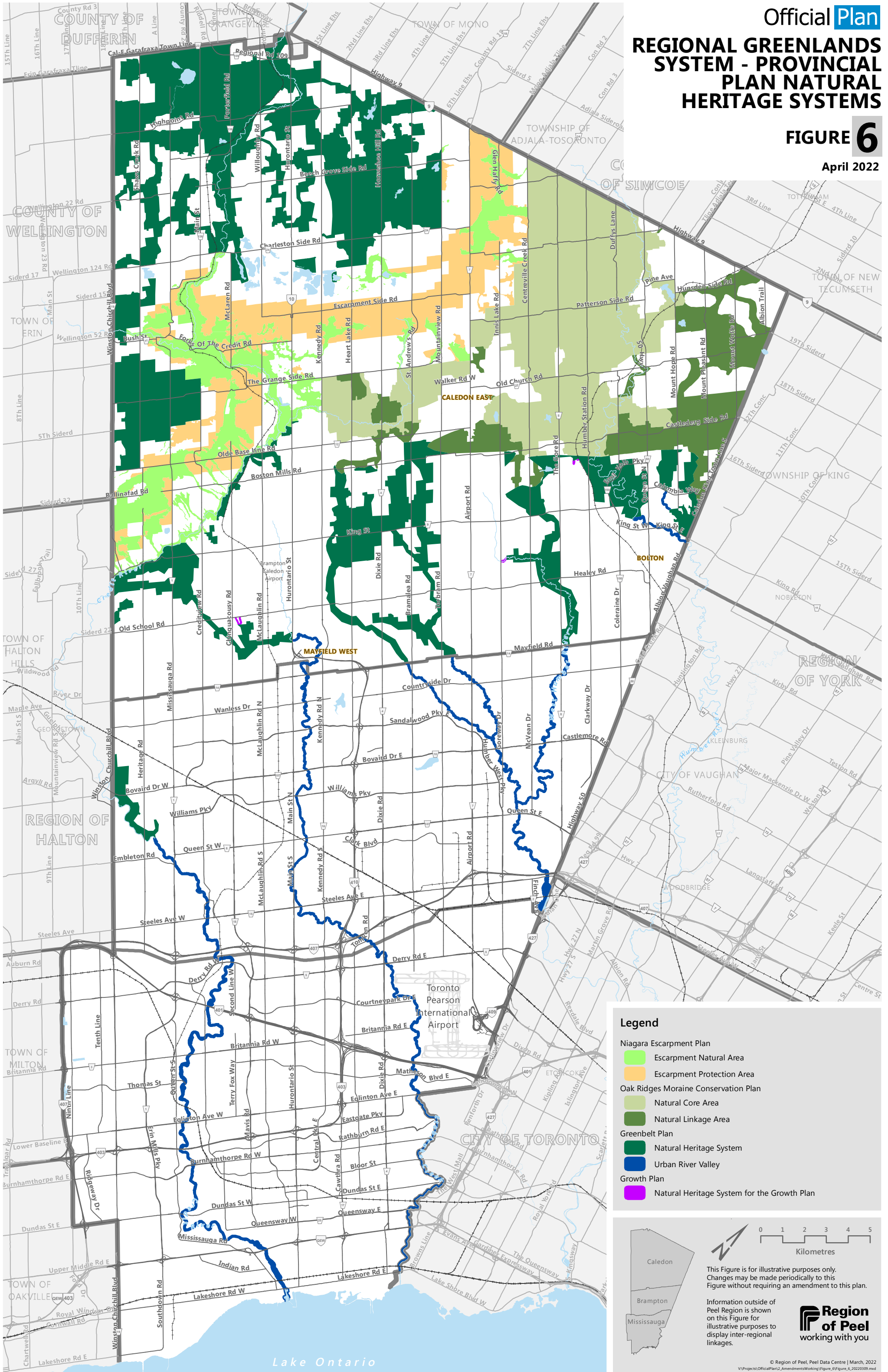
Information outside of Peel Region is shown on this Figure for illustrative purposes to display inter-regional linkages.

Region of Peel
working with you

REGIONAL GREENLANDS SYSTEM - PROVINCIAL PLAN NATURAL HERITAGE SYSTEMS

FIGURE 6

April 2022



Legend

- Niagara Escarpment Plan
 - Escarpment Natural Area
 - Escarpment Protection Area
- Oak Ridges Moraine Conservation Plan
 - Natural Core Area
 - Natural Linkage Area
- Greenbelt Plan
 - Natural Heritage System
 - Urban River Valley
- Growth Plan
 - Natural Heritage System for the Growth Plan

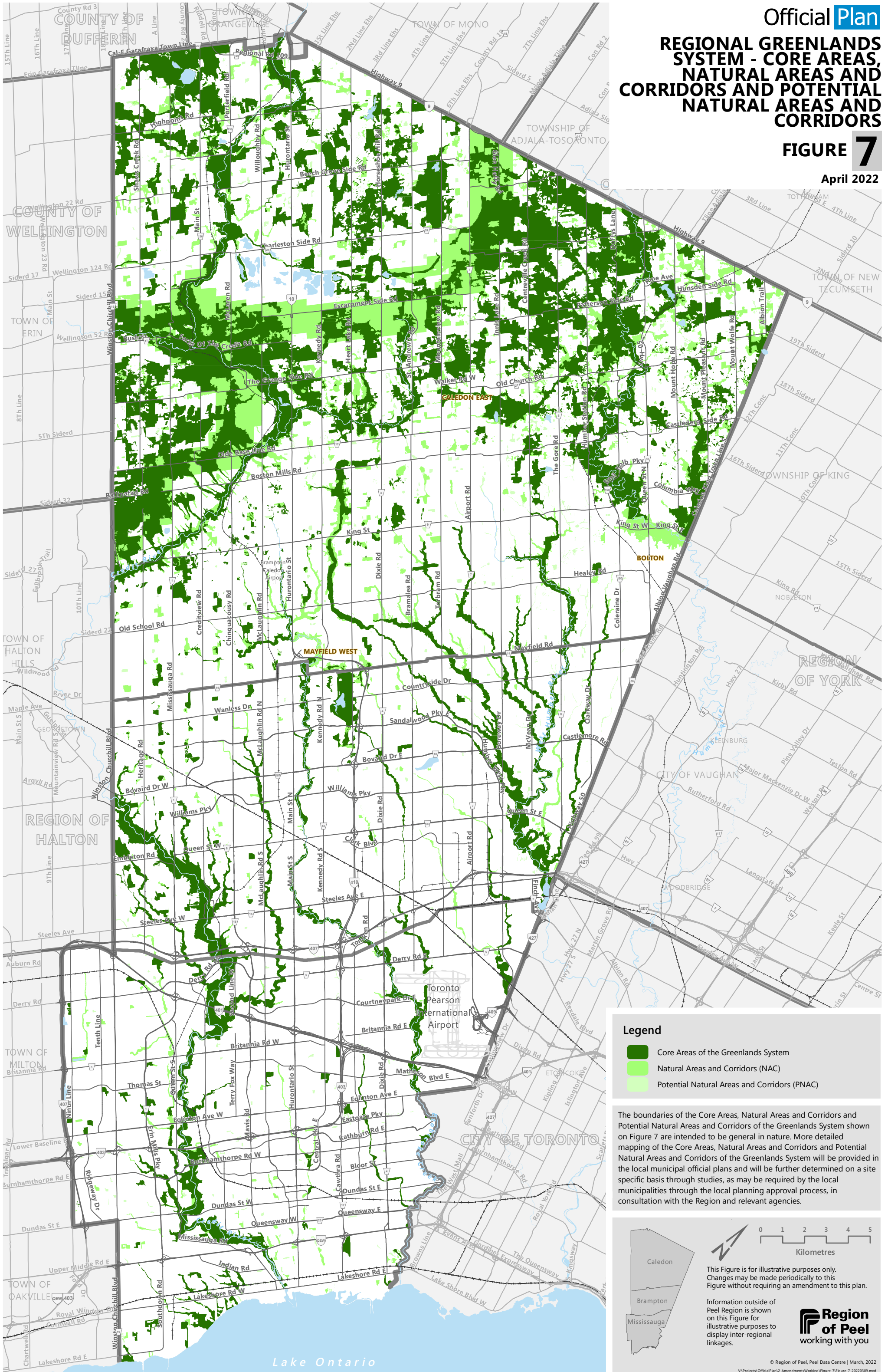
This Figure is for illustrative purposes only. Changes may be made periodically to this Figure without requiring an amendment to this plan.

Information outside of Peel Region is shown on this Figure for illustrative purposes to display inter-regional linkages.

REGIONAL GREENLANDS SYSTEM - CORE AREAS, NATURAL AREAS AND CORRIDORS AND POTENTIAL NATURAL AREAS AND CORRIDORS

FIGURE 7

April 2022



Legend

- Core Areas of the Greenlands System
- Natural Areas and Corridors (NAC)
- Potential Natural Areas and Corridors (PNAC)

The boundaries of the Core Areas, Natural Areas and Corridors and Potential Natural Areas and Corridors of the Greenlands System shown on Figure 7 are intended to be general in nature. More detailed mapping of the Core Areas, Natural Areas and Corridors and Potential Natural Areas and Corridors of the Greenlands System will be provided in the local municipal official plans and will be further determined on a site specific basis through studies, as may be required by the local municipalities through the local planning approval process, in consultation with the Region and relevant agencies.

0 1 2 3 4 5
Kilometres

This Figure is for illustrative purposes only. Changes may be made periodically to this Figure without requiring an amendment to this plan.

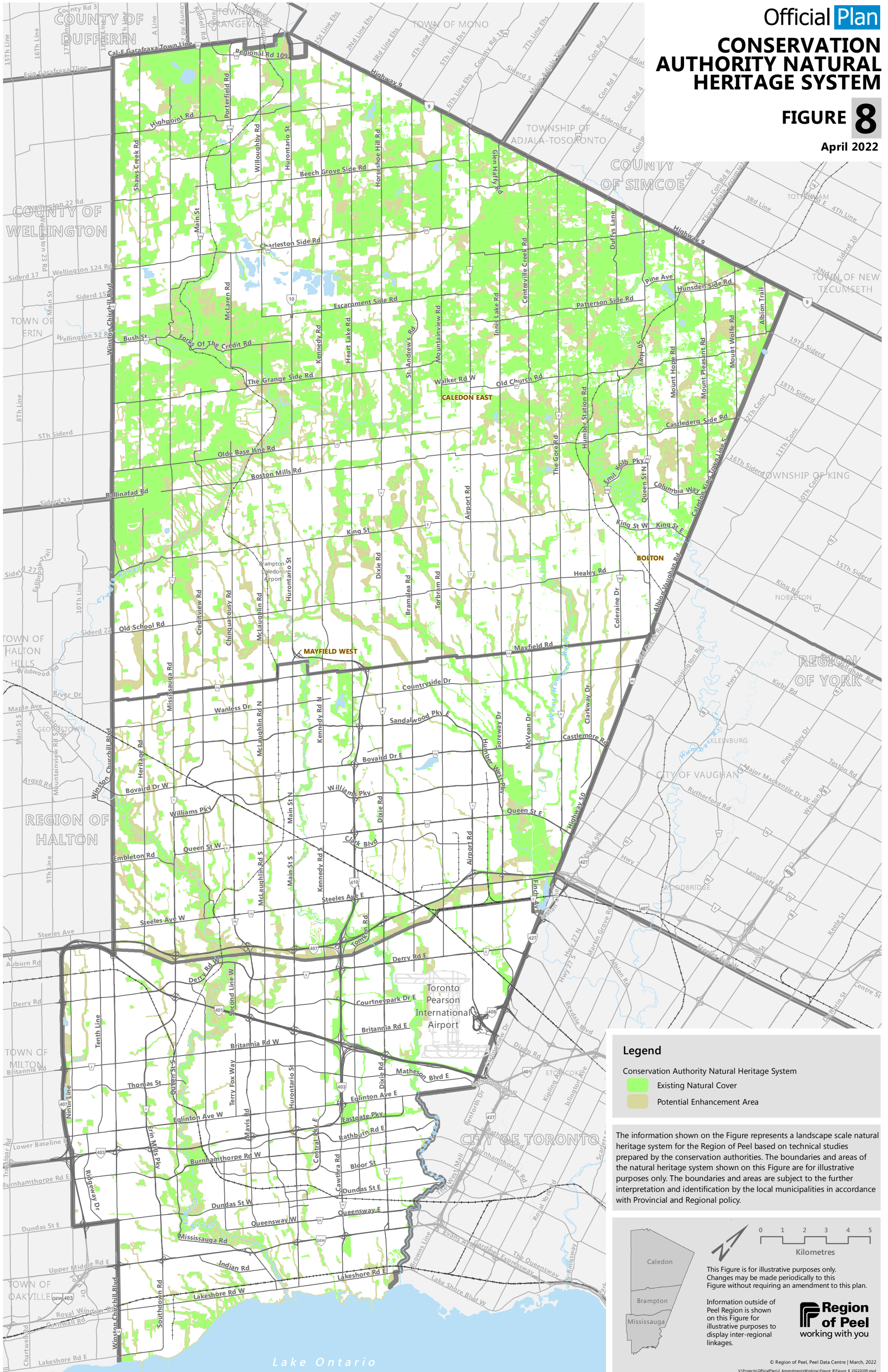
Information outside of Peel Region is shown on this Figure for illustrative purposes to display inter-regional linkages.

Region of Peel
working with you

CONSERVATION AUTHORITY NATURAL HERITAGE SYSTEM

FIGURE 8

April 2022



Legend

- Conservation Authority Natural Heritage System
- Existing Natural Cover
- Potential Enhancement Area

The information shown on the Figure represents a landscape scale natural heritage system for the Region of Peel based on technical studies prepared by the conservation authorities. The boundaries and areas of the natural heritage system shown on this Figure are for illustrative purposes only. The boundaries and areas are subject to the further interpretation and identification by the local municipalities in accordance with Provincial and Regional policy.

0 1 2 3 4 5
Kilometres

This Figure is for illustrative purposes only. Changes may be made periodically to this Figure without requiring an amendment to this plan.

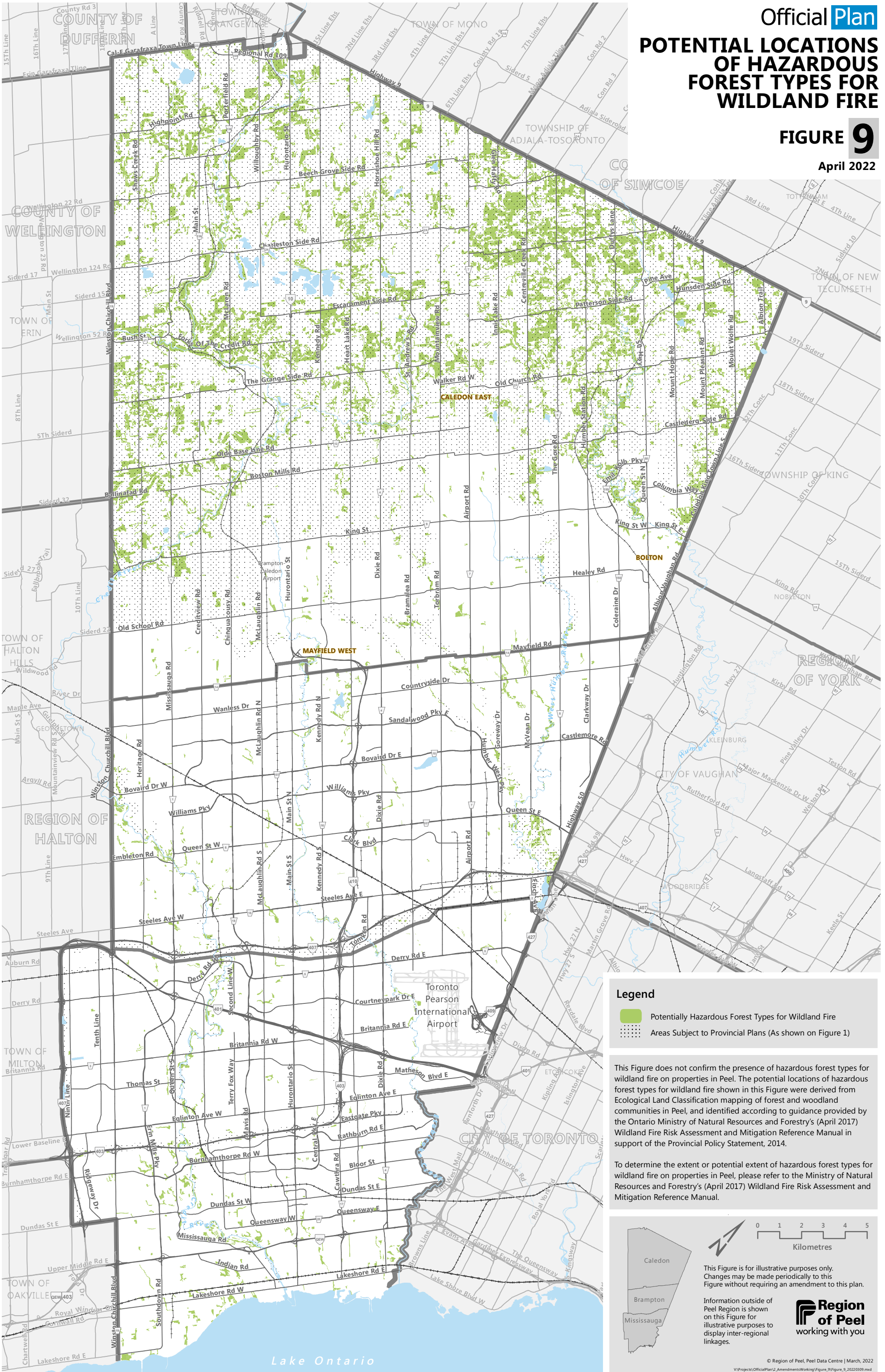
Information outside of Peel Region is shown on this Figure for illustrative purposes to display inter-regional linkages.

Region of Peel
working with you

POTENTIAL LOCATIONS OF HAZARDOUS FOREST TYPES FOR WILDLAND FIRE

FIGURE 9

April 2022



Legend

- Potentially Hazardous Forest Types for Wildland Fire
- Areas Subject to Provincial Plans (As shown on Figure 1)

This Figure does not confirm the presence of hazardous forest types for wildland fire on properties in Peel. The potential locations of hazardous forest types for wildland fire shown in this Figure were derived from Ecological Land Classification mapping of forest and woodland communities in Peel, and identified according to guidance provided by the Ontario Ministry of Natural Resources and Forestry's (April 2017) Wildland Fire Risk Assessment and Mitigation Reference Manual in support of the Provincial Policy Statement, 2014.

To determine the extent or potential extent of hazardous forest types for wildland fire on properties in Peel, please refer to the Ministry of Natural Resources and Forestry's (April 2017) Wildland Fire Risk Assessment and Mitigation Reference Manual.

0 1 2 3 4 5
Kilometres

This Figure is for illustrative purposes only. Changes may be made periodically to this Figure without requiring an amendment to this plan.

Information outside of Peel Region is shown on this Figure for illustrative purposes to display inter-regional linkages.

Region of Peel
working with you

Official Plan POPULATION AND EMPLOYMENT GROWTH IN PEEL REGION

FIGURE 10

April 2022

Source: Statistics Canada Censuses; Hemson Consulting;
Region of Peel forecast data and archives;
Places to Grow-Growth Plan for the Greater Golden Horseshoe, 2020.

This Figure is for illustrative purposes only. Changes may be made periodically to this Figure without requiring an amendment to this Plan.

Year	Measure	Brampton	Caledon	Mississauga	Peel Total
1971	Population	72,000	17,300	175,000	264,300
	Households	18,500	4,600	46,900	70,000
	Employment	32,000	3,000	70,000	105,000
	Activity Rate	44.44%	17.34%	40.00%	39.73%
1981	Population	152,000	27,200	321,300	500,500
	Households	44,000	7,800	99,000	150,800
	Employment	58,600	6,400	164,900	229,900
	Activity Rate	38.55%	23.53%	51.32%	45.93%
1991	Population	242,700	36,200	479,600	758,500
	Households	70,700	10,800	148,200	229,700
	Employment	92,600	11,500	274,100	378,200
	Activity Rate	38.15%	31.77%	57.15%	49.86%
1996	Population	276,500	41,100	561,200	878,800
	Households	81,100	12,600	172,300	266,000
	Employment	105,800	15,200	300,300	421,300
	Activity Rate	38.26%	36.98%	53.51%	47.94%
2001	Population	339,700	52,800	639,800	1,032,300
	Households	97,600	16,100	195,200	308,900
	Employment	133,600	18,400	382,300	534,300
	Activity Rate	39.33%	35.85%	59.75%	51.76%
2006	Population	452,800	59,500	697,900	1,210,200
	Households	125,900	18,200	214,900	359,000
	Employment	155,900	21,400	430,600	607,900
	Activity Rate	34.43%	35.97%	61.70%	50.23%
2011	Population	545,500	61,900	742,700	1,350,100
	Households	149,300	19,100	234,600	402,900
	Employment	172,100	24,100	448,000	682,000
	Activity Rate	31.55%	38.93%	60.32%	50.51%
2016	Population	615,700	69,000	748,400	1,433,100
	Households	168,100	21,000	238,200	427,300
	Employment	191,300	27,200	476,800	695,300
	Activity Rate	31.07%	39.42%	63.71%	48.52%
2021	Population	703,000	80,000	795,000	1,578,000
	Households	186,000	24,000	247,000	457,000
	Employment	211,000	32,000	493,000	736,000
	Activity Rate	30.01%	40.00%	62.01%	46.64%
2031	Population	865,000	112,000	852,000	1,829,000
	Households	241,000	36,000	280,000	557,000
	Employment	273,000	52,000	537,000	862,000
	Activity Rate	31.56%	46.43%	63.03%	47.13%
2041	Population	929,000	201,000	920,000	2,050,000
	Households	272,000	63,000	318,000	653,000
	Employment	314,000	82,000	563,000	959,000
	Activity Rate	33.80%	40.80%	61.20%	46.78%
2051	Population	985,000	300,000	995,000	2,280,000
	Households	291,000	92,000	347,000	730,000
	Employment	355,000	125,000	590,000	1,070,000
	Activity Rate	36.04%	41.67%	59.30%	46.93%

Note: This figure provides historical information for the specified period. 1971-2016 population, household, and employment figures and estimates are rounded to the nearest hundred. 2021, 2031, 2041 and 2051 forecasts are rounded to the nearest thousand.

1971 and 1981 population figures include Ontario gross census undercoverage of 1.68% and 1.94% respectively. 1991 and 2001 population figures include Peel Region net census undercoverage rates (1991=3.39%, 2001=4.2%). To be consistent with Places to Grow forecasts, the undercount of 3.94% from Hemson's background study: Greater Golden Horseshoe Growth Forecasts to 2041, Technical Report November 2011 was applied to 2011. The undercount of 3.26% was applied to 2016 population.

1971 and 1981 employment figures do not take into account "no fixed place of work". 1991 and 2001 employment figures include "no fixed place of work" as per a formula created by Hemson Consulting. 2011 Employment figures from NHS including No Fixed Place of Work. 2016 Employment figures are estimates from Hemson's Draft January 2021 Allocation.

1971-2011 Household figures are sourced from census Occupied Private Dwelling counts.

All 2021, 2031, 2041 and 2051 values are forecasted by Hemson in cooperation with Regional and Local Area Municipal staff, and sourced from the Draft September 2021 allocation.

 **Region
of Peel**
working with you

**TRANSIT INFRASTRUCTURE
STATUS OF MAJOR TRANSIT
STATION AREAS**
Page #1

FIGURE 11

April 2022

This Figure is for illustrative purposes only. Changes may be made periodically to this Figure without requiring an amendment to this plan.

Stop/Station Status Description:

Existing: Transit infrastructure projects that are built and operational.

In Delivery: Transit infrastructure projects that are actively being implemented; includes all stages of delivery once funding has been confirmed and publicly announced (detailed design work, procurement, construction).

Unfunded: Transit infrastructure projects that have been identified in planning documents as future potential transit investments, but are not yet in delivery.

* Major Transit Station Areas identified as priority transit corridors on Schedule 5 of the Growth Plan, 2019.

¹ Note that these GO rail stations are existing, but the connections to nearby Hurontario LRT stations (which may be unfunded or in delivery) are not. As a result, the status of nearby Hurontario LRT stations such as HLRT-1, HLRT-6, and HLRT-25 differ.

² Mississauga has applied for Investing in Canada Infrastructure Program (ICIP) funding for this 7.2km section of the Dundas BRT.

³ The Mississauga ICIP project includes a stop at Dixie, on the Dundas corridor, and protects for a future stop at Dixie GO, which would require a veer off the corridor.

⁴ Mississauga has received ICIP funding for this section of the Lakeshore BRT.

⁵ This stop/station qualifies as an MTSA on "major bus depots in an urban core", even though it is not on any existing or planned higher order transit. While a stop currently exists, it relies on municipally-run bus service and the municipality may have plans to expand this stop/station in the future.

⁶ Same as above.

⁷ Same as above.

⁸ Same as above.

⁹ Station/Stop Status is provided by the Province and updated periodically.

	Code	Station Name	Municipality	Stop/Station Status (as of March 2022 ⁹)
Hurontario LRT	HLRT - 1 *	Port Credit GO	Mississauga	In delivery
	HLRT - 2 *	Mineola	Mississauga	In delivery
	HLRT - 3 *	North Service	Mississauga	In delivery
	HLRT - 4 *	Queensway	Mississauga	In delivery
	HLRT - 5 *	Dundas	Mississauga	In delivery
	HLRT - 6 *	Cooksville GO	Mississauga	In delivery
	HLRT - 7 *	Fairview (Central Parkway)	Mississauga	In delivery
	HLRT - 8 *	Burnhamthorpe (Matthews Gate)	Mississauga	In delivery
	HLRT - 9	Main	Mississauga	Unfunded
	HLRT - 10	Duke of York	Mississauga	Unfunded
	HLRT - 11 *	City Centre	Mississauga	In delivery
	HLRT - 12 *	Robert Speck	Mississauga	In delivery
	HLRT - 13 *	Eglinton	Mississauga	In delivery
	HLRT - 14 *	Bristol	Mississauga	In delivery
	HLRT - 15 *	Matheson	Mississauga	In delivery
	HLRT - 16 *	Britannia	Mississauga	In delivery
	HLRT - 17 *	Courtney Park	Mississauga	In delivery
	HLRT - 18 *	Derry	Mississauga	In delivery
	HLRT - 19 *	Highway 407	Mississauga	Unfunded
	HLRT - 20 *	Ray Lawson	Brampton	In delivery
	HLRT - 21 *	County Court	Brampton	In delivery
	HLRT - 22 *	Gateway Terminal	Brampton	In delivery
	HLRT - 23	Charolais	Brampton	Unfunded
	HLRT - 24	Nanwood	Brampton	Unfunded
	HLRT - 25	Queen at Wellington	Brampton	Unfunded
Milton GO	MIL - 1	Lisgar GO	Mississauga	Existing
	MIL - 2	Meadowvale GO	Mississauga	Existing
	MIL - 3	Streetsville GO	Mississauga	Existing
	MIL - 4	Erindale GO	Mississauga	Existing
	MIL - 5	Cooksville GO	Mississauga	Existing ¹
	MIL - 6	Dixie GO	Mississauga	Existing
Kitchener GO	KIT - 1 *	Malton GO	Mississauga	Existing
	KIT - 2 *	Bramalea GO	Brampton	Existing
	KIT - 3 *	Brampton GO	Brampton	Existing ¹
	KIT - 4 *	Mount Pleasant GO	Brampton	Existing
Lakeshore West GO	LWGO - 1 *	Port Credit GO	Mississauga	Existing ¹
	LWGO - 2 *	Clarkson GO	Mississauga	Existing
403 BRT (Mississauga Transitway)	403 - 1	Ridgeway	Mississauga	Unfunded
	403 - 2 *	Winston Churchill	Mississauga	Existing
	403 - 3 *	Erin Mills	Mississauga	Existing
	403 - 4 *	Creditview	Mississauga	Unfunded
	403 - 5 *	City Centre	Mississauga	Existing
	403 - 6 *	Central Parkway	Mississauga	Existing
	403 - 7 *	Cawthra	Mississauga	Existing
	403 - 8 *	Tomken	Mississauga	Existing
	403 - 9 *	Dixie	Mississauga	Existing
	403 - 10 *	Tahoe	Mississauga	Existing
	403 - 11 *	Etobicoke Creek	Mississauga	Existing
	403 - 12 *	Spectrum	Mississauga	Existing
	403 - 13 *	Orbitor	Mississauga	Existing
	403 - 14 *	Renforth	Mississauga	Existing
Eglinton Crosstown West Extension	ECWE - 0	Renforth	Mississauga	Unfunded
	ECWE - 1	Convair	Mississauga	Unfunded
	ECWE - 2	Airway Centre (Bresler Drive at Campus Rd)	Mississauga	Unfunded
	ECWE - 3	Multi-Modal Transportation Hub (Regional Transit and Passenger Centre)	Mississauga	Unfunded

**TRANSIT INFRASTRUCTURE
STATUS OF MAJOR TRANSIT
STATION AREAS**
Page #2

FIGURE 11

April 2022

This Figure is for illustrative purposes only. Changes may be made periodically to this Figure without requiring an amendment to this plan.

Stop/Station Status Description:

Existing: Transit infrastructure projects that are built and operational.

In Delivery: Transit infrastructure projects that are actively being implemented; includes all stages of delivery once funding has been confirmed and publicly announced (detailed design work, procurement, construction).

Unfunded: Transit infrastructure projects that have been identified in planning documents as future potential transit investments, but are not yet in delivery.

* Major Transit Station Areas identified as priority transit corridors on Schedule 5 of the Growth Plan, 2019.

¹ Note that these GO rail stations are existing, but the connections to nearby Hurontario LRT stations (which may be unfunded or in delivery) are not. As a result, the status of nearby Hurontario LRT stations such as HLRT-1, HLRT-6, and HLRT-25 differ.

² Mississauga has applied for Investing in Canada Infrastructure Program (ICIP) funding for this 7.2km section of the Dundas BRT.

³ The Mississauga ICIP project includes a stop at Dixie, on the Dundas corridor, and protects for a future stop at Dixie GO, which would require a veer off the corridor.

⁴ Mississauga has received ICIP funding for this section of the Lakeshore BRT.

⁵ This stop/station qualifies as an MTA on "major bus depots in an urban core", even though it is not on any existing or planned higher order transit. While a stop currently exists, it relies on municipally-run bus service and the municipality may have plans to expand this stop/station in the future.

⁶ Same as above.

⁷ Same as above.

⁸ Same as above.

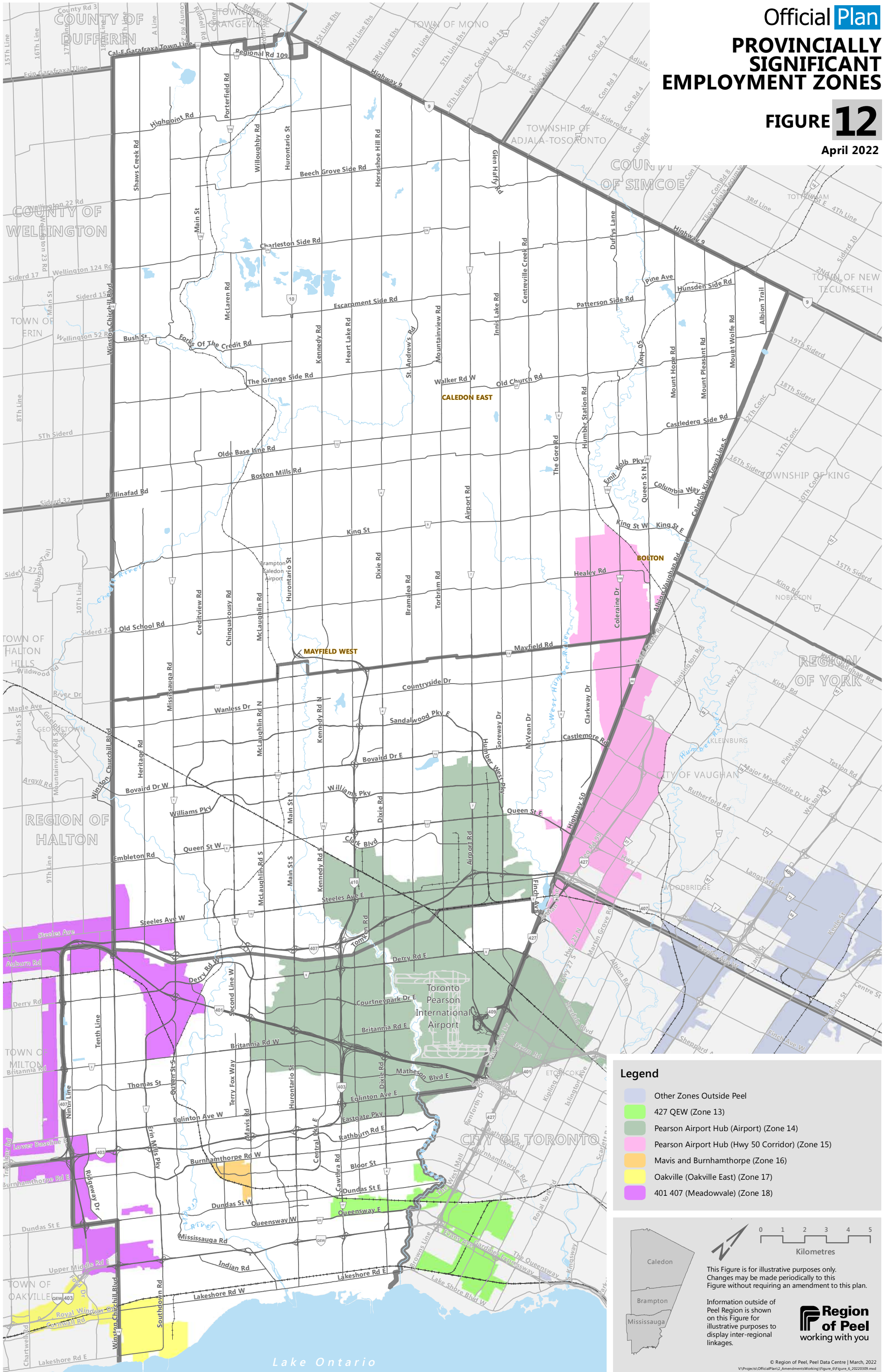
⁹ Station/Stop Status is provided by the Province and updated periodically.

	Code	Station Name	Municipality	Stop/Station Status (as of March 2022 ⁹)
Dundas BRT ²	DUN - 1	Ridgeway	Mississauga	Unfunded
	DUN - 2	Winston Churchill	Mississauga	Unfunded
	DUN - 3	Glen Erin	Mississauga	Unfunded
	DUN - 4	Erin Mills	Mississauga	Unfunded
	DUN - 5	UTM	Mississauga	Unfunded
	DUN - 6	Credit Woodlands	Mississauga	Unfunded
	DUN - 7	Erindale Station	Mississauga	Unfunded
	DUN - 8	Wolfedale	Mississauga	Unfunded
	DUN - 9	Clayhill	Mississauga	Unfunded
	DUN - 10	Confederation Parkway	Mississauga	In delivery
	DUN - 11	Hurontario St	Mississauga	In delivery
	DUN - 12	Kirwin Ave/Camilla Rd	Mississauga	In delivery
	DUN - 13	Grenville Dr/Cliff Rd	Mississauga	In delivery
	DUN - 14	Cawthra Rd	Mississauga	In delivery
	DUN - 15	Tomken Rd	Mississauga	In delivery
	DUN - 16	Dixie Rd ³	Mississauga	In delivery
	DUN - 17	Wharton Way	Mississauga	In delivery
Queen Street BRT	QUE - 1	Centre St.	Brampton	Unfunded
	QUE - 2	Kennedy	Brampton	Unfunded
	QUE - 3	Rutherford	Brampton	Unfunded
	QUE - 4	Laurelcrest	Brampton	Unfunded
	QUE - 5	Dixie	Brampton	Unfunded
	QUE - 6	Central Park (Bramalea Terminal)	Brampton	Unfunded
	QUE - 7	Bramalea	Brampton	Unfunded
	QUE - 8	Glenvale-Finchgate	Brampton	Unfunded
	QUE - 9	Torbram	Brampton	Unfunded
	QUE - 10	Chrysler-Gateway	Brampton	Unfunded
	QUE - 11	Airport	Brampton	Unfunded
	QUE - 12	Goreway	Brampton	Unfunded
	QUE - 13	McVean	Brampton	Unfunded
	QUE - 14	The Gore	Brampton	Unfunded
	QUE - 15	Highway 50	Brampton	Unfunded
407 Transitway	407 - 1	Britannia	Mississauga	Unfunded
	407 - 2	Derry	Mississauga	Unfunded
	407 - 3	Lisgar Station	Mississauga	Unfunded
	407 - 4	Mississauga Rd.	Brampton	Unfunded
	407 - 5	Hurontario	Brampton	Unfunded
	407 - 6	Dixie	Brampton	Unfunded
	407 - 7	Airport Rd.	Brampton	Unfunded
	407 - 8	Goreway	Brampton	Unfunded
Lakeshore BRT ⁴	LBRT - 1	Dixie	Mississauga	In delivery
	LBRT - 2	Haig (Lakeview Waterfront)	Mississauga	In delivery
	LBRT - 3	Lakefront Promenade	Mississauga	In delivery
Transit Hub	HUB - 1	Bolton GO	Caledon	Unfunded
	HUB - 2	Mayfield West	Caledon	Unfunded ⁵
	HUB - 3	Steeles at Mississauga	Brampton	Unfunded ⁶
	HUB - 4	Trinity Common Terminal	Brampton	Existing ⁷
	HUB - 5	Bramalea Terminal	Brampton	Existing ⁸

Official Plan
PROVINCIALY SIGNIFICANT EMPLOYMENT ZONES

FIGURE 12

April 2022



Legend

- Other Zones Outside Peel
- 427 QEW (Zone 13)
- Pearson Airport Hub (Airport) (Zone 14)
- Pearson Airport Hub (Hwy 50 Corridor) (Zone 15)
- Mavis and Burnhamthorpe (Zone 16)
- Oakville (Oakville East) (Zone 17)
- 401/407 (Meadowdale) (Zone 18)

0 1 2 3 4 5
 Kilometres

This Figure is for illustrative purposes only. Changes may be made periodically to this Figure without requiring an amendment to this plan.

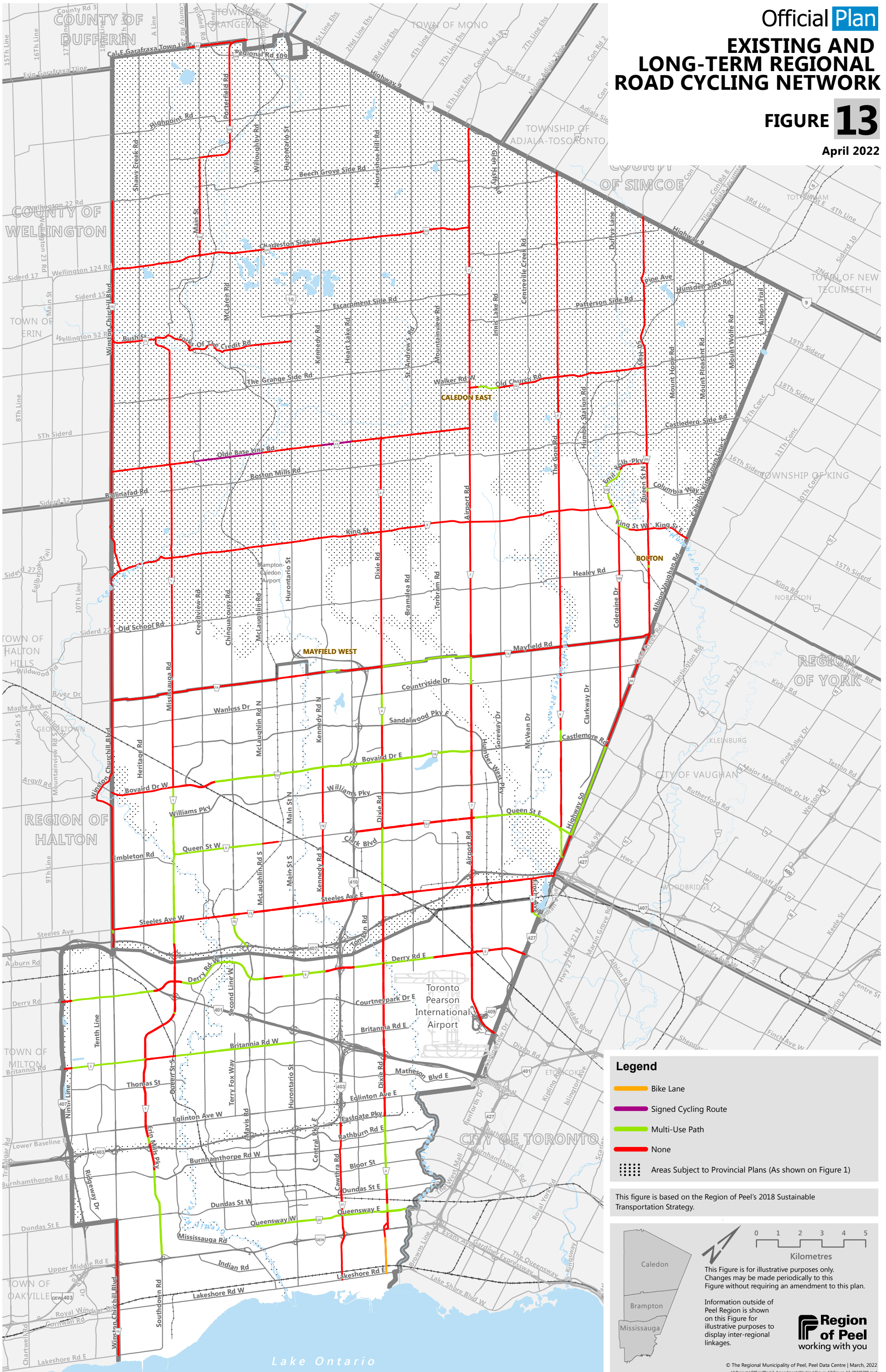
Information outside of Peel Region is shown on this Figure for illustrative purposes to display inter-regional linkages.



EXISTING AND LONG-TERM REGIONAL ROAD CYCLING NETWORK

FIGURE 13

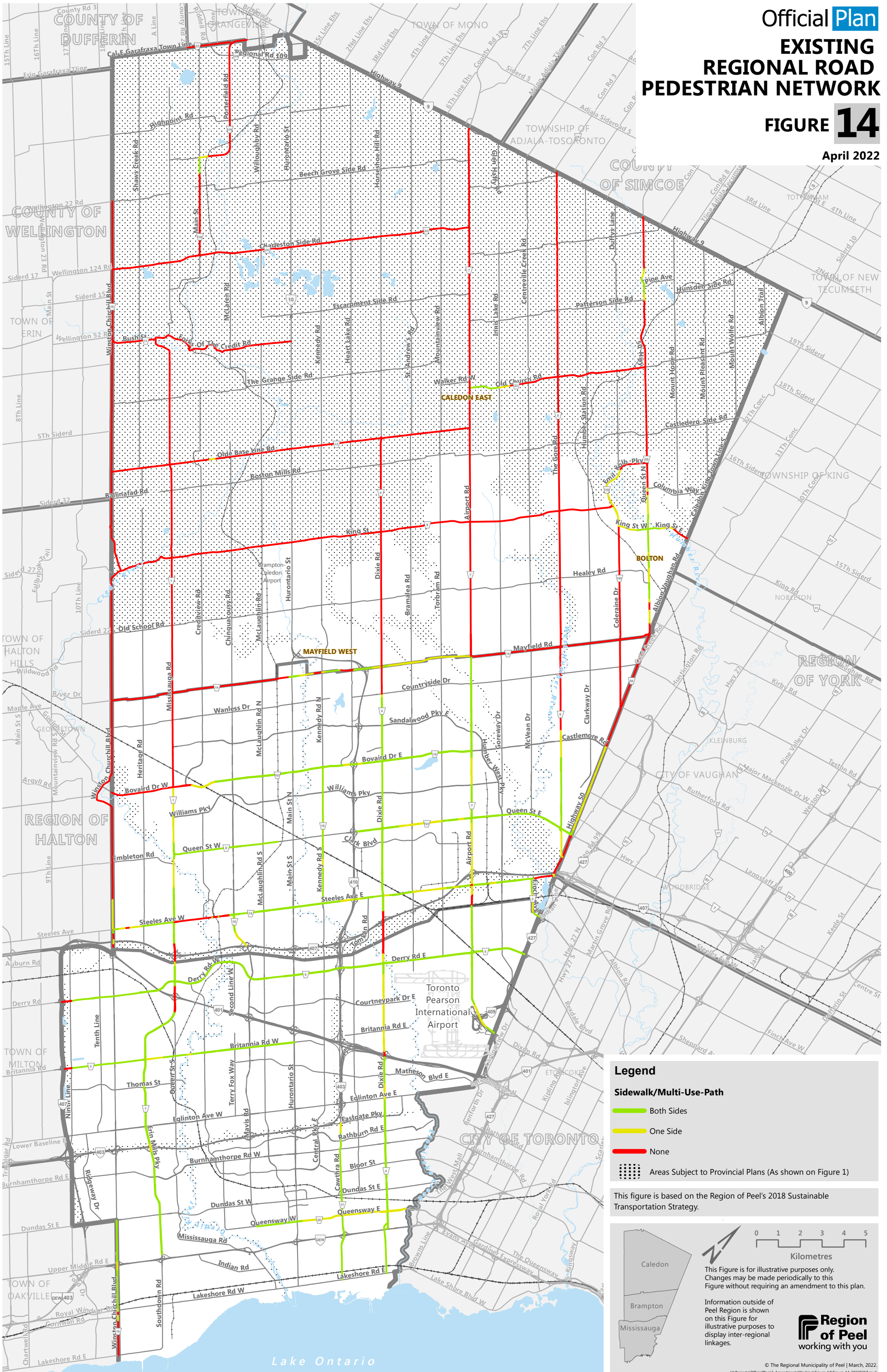
April 2022



EXISTING REGIONAL ROAD PEDESTRIAN NETWORK

FIGURE 14

April 2022



Legend

Sidewalk/Multi-Use-Path

Both Sides

One Side

None

Areas Subject to Provincial Plans (As shown on Figure 1)

This figure is based on the Region of Peel's 2018 Sustainable Transportation Strategy.

0 1 2 3 4 5
Kilometres

This Figure is for illustrative purposes only. Changes may be made periodically to this Figure without requiring an amendment to this plan.

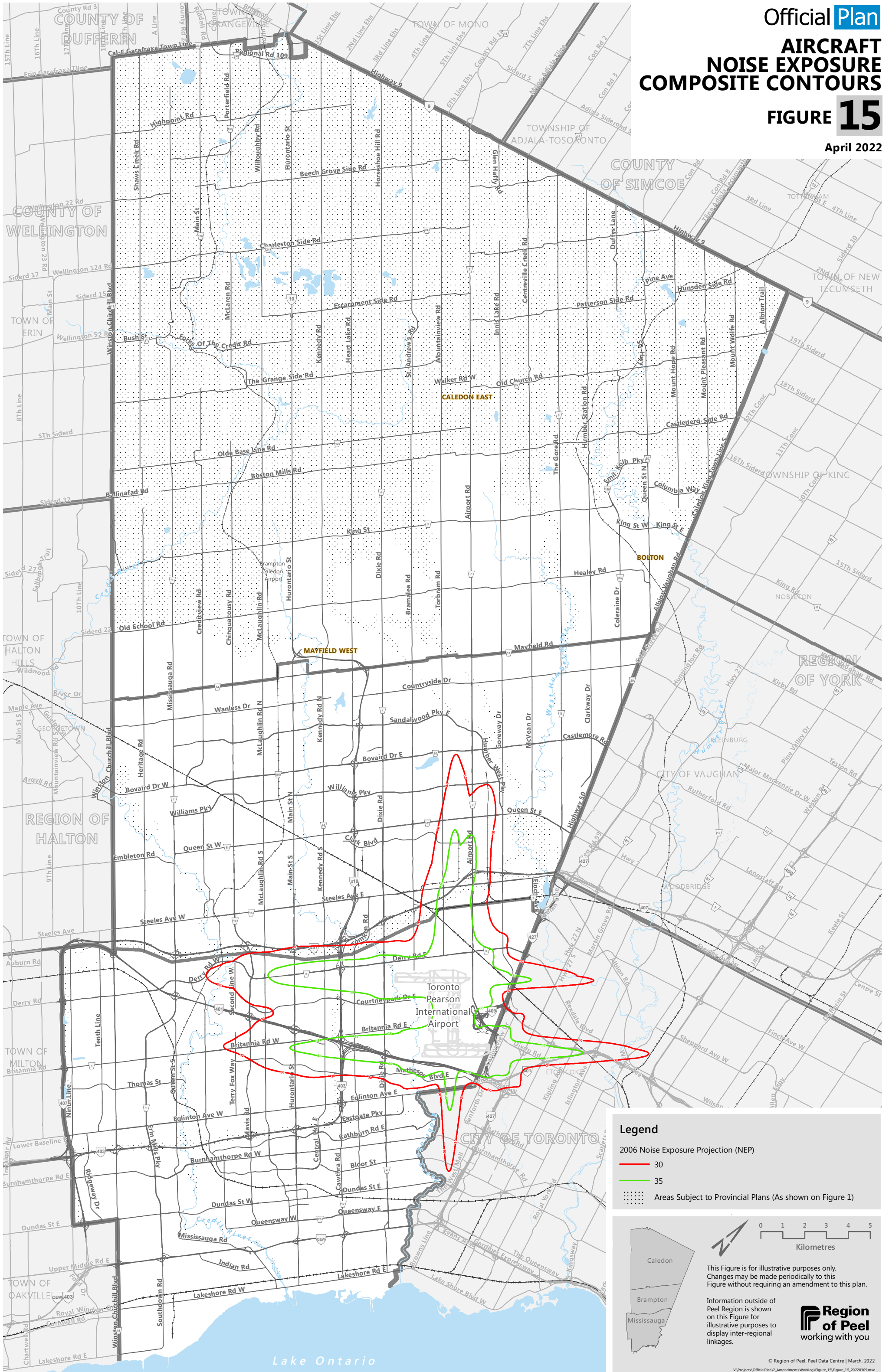
Information outside of Peel Region is shown on this Figure for illustrative purposes to display inter-regional linkages.

Region of Peel
working with you

AIRCRAFT NOISE EXPOSURE COMPOSITE CONTOURS

FIGURE 15

April 2022



Legend

- 2006 Noise Exposure Projection (NEP)
 - 30
 - 35
- Areas Subject to Provincial Plans (As shown on Figure 1)

0 1 2 3 4 5
Kilometres

This Figure is for illustrative purposes only. Changes may be made periodically to this Figure without requiring an amendment to this plan.

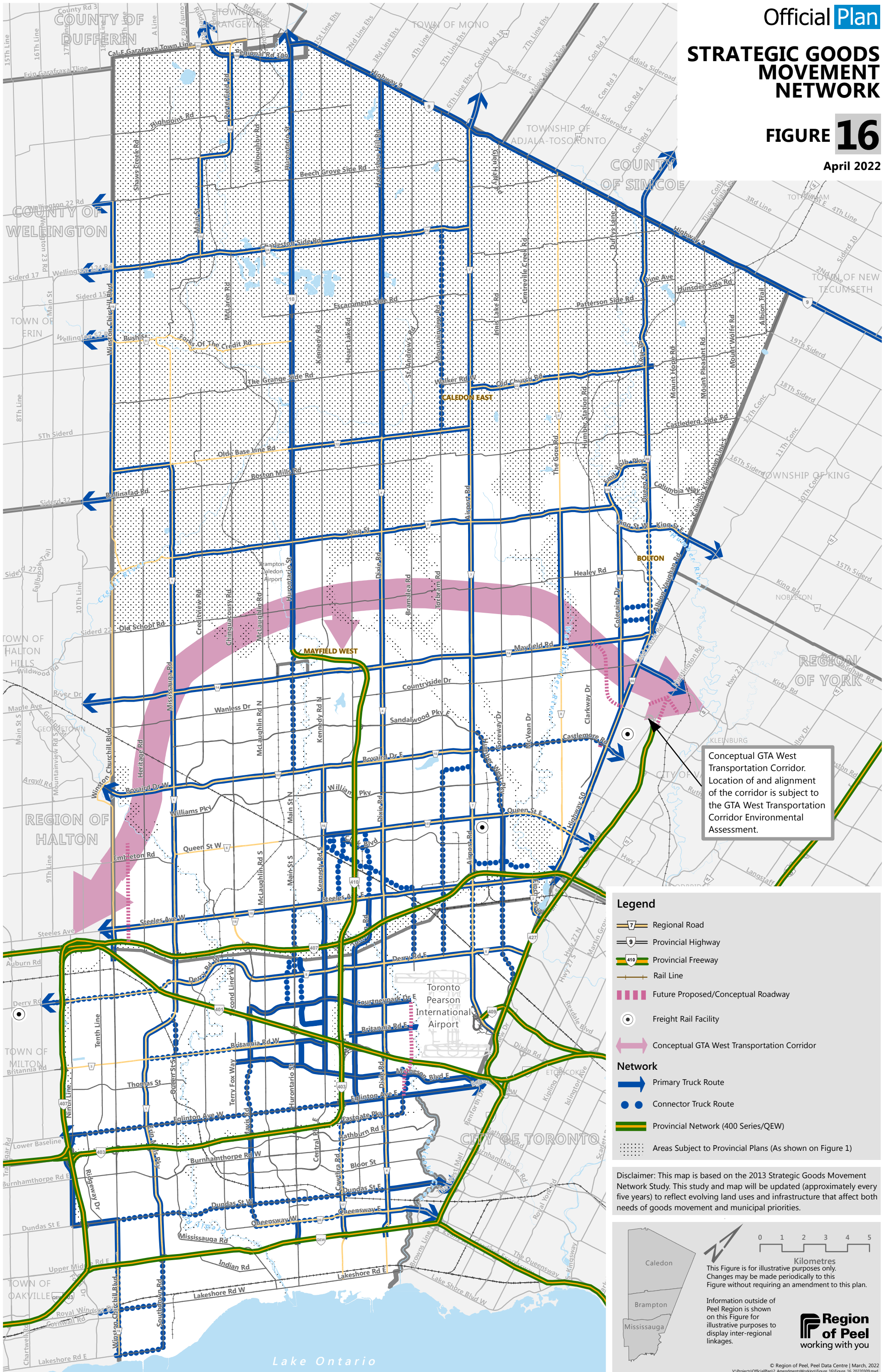
Information outside of Peel Region is shown on this Figure for illustrative purposes to display inter-regional linkages.



STRATEGIC GOODS MOVEMENT NETWORK

FIGURE 16

April 2022



Conceptual GTA West Transportation Corridor. Location of and alignment of the corridor is subject to the GTA West Transportation Corridor Environmental Assessment.

Legend

- Regional Road
- Provincial Highway
- Provincial Freeway
- Rail Line
- Future Proposed/Conceptual Roadway
- Freight Rail Facility
- Conceptual GTA West Transportation Corridor

Network

- Primary Truck Route
- Connector Truck Route
- Provincial Network (400 Series/QEW)
- Areas Subject to Provincial Plans (As shown on Figure 1)

Disclaimer: This map is based on the 2013 Strategic Goods Movement Network Study. This study and map will be updated (approximately every five years) to reflect evolving land uses and infrastructure that affect both needs of goods movement and municipal priorities.

0 1 2 3 4 5
Kilometres

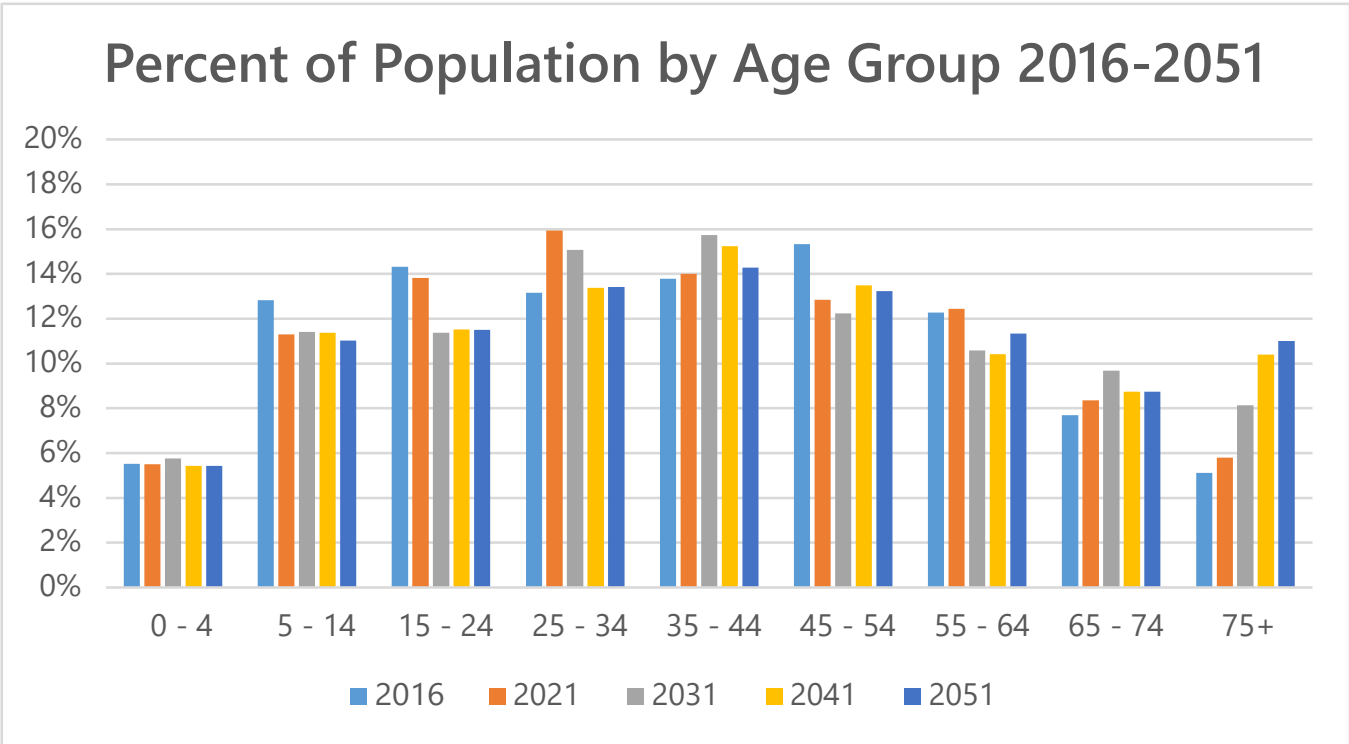
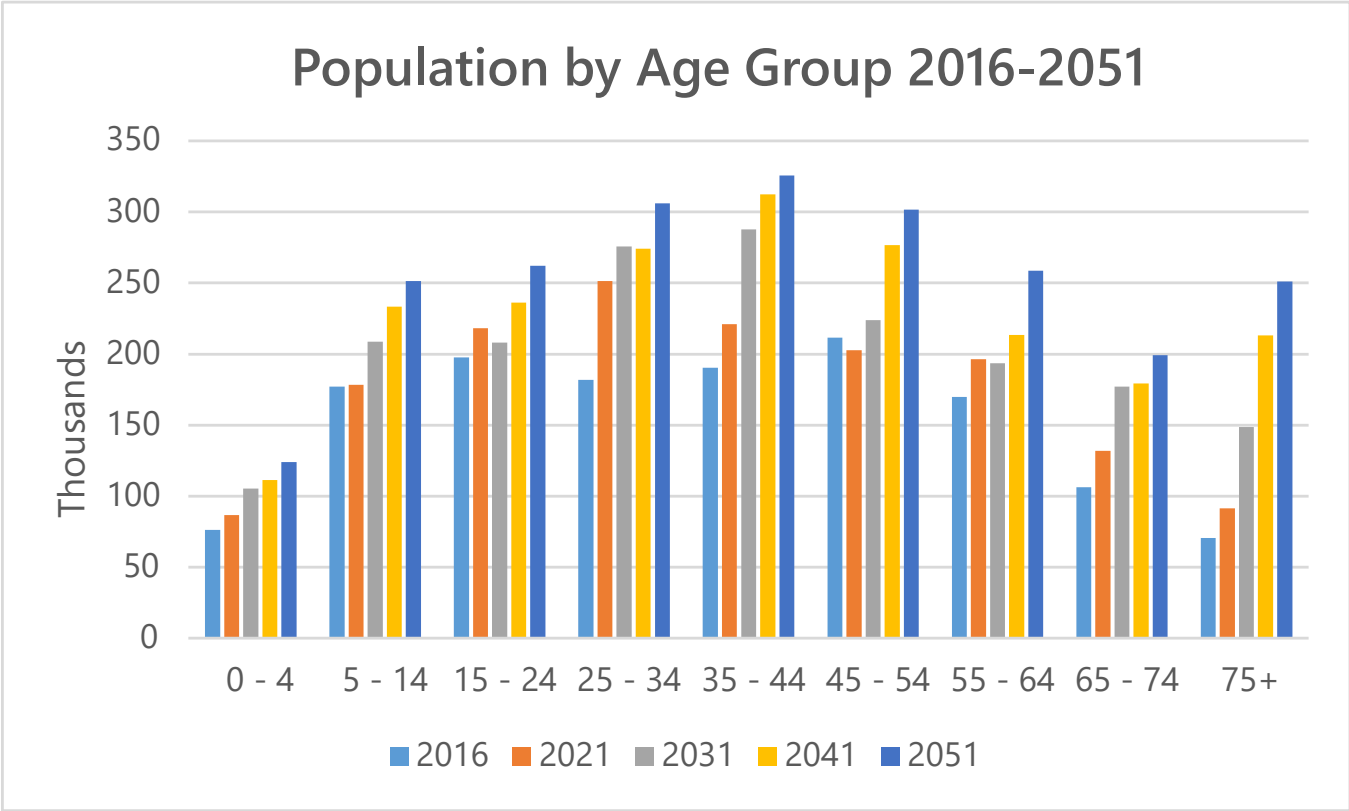
This Figure is for illustrative purposes only. Changes may be made periodically to this Figure without requiring an amendment to this plan.

Information outside of Peel Region is shown on this Figure for illustrative purposes to display inter-regional linkages.

Region of Peel
working with you

This Figure is for illustrative purposes only. Changes may be made periodically to this Figure without requiring an amendment to this Plan.

Source: Statistics Canada 2016 Census; Hemson Consulting; Region of Peel forecast data and archives.



Source: Statistics Canada 2011 Census & 2016 Census; Hemson Consulting; Region of Peel forecast data and archives.

Official Plan
**HOME LANGUAGES:
 PEEL REGION
 AND ONTARIO**

FIGURE 18

April 2022

Non-institutional Population by Home Language	Ontario	Percentage of Ontario	Peel	Percentage of Peel
Total Population	13,448,494	100.00%	1,381,739	100.00%
Institutional Population	135,629	1.01%	5,939	0.43%
Non-Institutional Population	13,312,865	98.99%	1,375,800	99.57%
1. Single Responses	12522045	93.11%	1202795	87.05%
a. Official Languages	10605725	78.86%	843850	61.07%
English	10328680	76.80%	838125	60.66%
French	277045	2.06%	5725	0.41%
b. Non-Official Languages	1916315	14.25%	358950	25.98%
Punjabi (Panjabi)	132135	0.98%	94880	6.87%
Urdu	91450	0.68%	35935	2.60%
Mandarin	220535	1.64%	19955	1.44%
Arabic	94195	0.70%	18915	1.37%
Polish	52555	0.39%	17660	1.28%
Spanish	104820	0.78%	15615	1.13%
Tamil	80600	0.60%	14935	1.08%
Gujarati	45445	0.34%	14890	1.08%
Cantonese	198745	1.48%	13605	0.98%
Tagalog (Pilipino; Filipino)	75070	0.56%	13275	0.96%
Hindi	28960	0.22%	12250	0.89%
Portuguese	67415	0.50%	11045	0.80%
Vietnamese	46435	0.35%	9925	0.72%
Italian	72960	0.54%	6370	0.46%
Persian (Farsi)	80305	0.60%	5055	0.37%
Bengali	29590	0.22%	3825	0.28%
Ukrainian	15415	0.11%	3760	0.27%
Russian	63570	0.47%	3610	0.26%
Korean	48540	0.36%	3545	0.26%
Malayalam	8760	0.07%	2905	0.21%
Serbian	23175	0.17%	2545	0.18%
Croatian	11125	0.08%	2495	0.18%
Telugu	5705	0.04%	2005	0.15%
Assyrian Neo-Aramaic	9515	0.07%	1870	0.14%
Romanian	19920	0.15%	1685	0.12%
Akan (Twi)	4415	0.03%	1480	0.11%
Albanian	9190	0.07%	1340	0.10%
Sinhala (Sinhalese)	4595	0.03%	1260	0.09%
Nepali	5640	0.04%	1250	0.09%
Greek	21700	0.16%	1070	0.08%
Pashto	6750	0.05%	1015	0.07%
Marathi	2420	0.02%	960	0.07%
Hungarian	12700	0.09%	890	0.06%
Turkish	10545	0.08%	875	0.06%
Bulgarian	4830	0.04%	785	0.06%
Macedonian	6255	0.05%	760	0.06%
Sindhi	2880	0.02%	720	0.05%
Bosnian	3220	0.02%	705	0.05%
Chinese; n.o.s.	9630	0.07%	685	0.05%
Creole; n.o.s.	3995	0.03%	650	0.05%
Somali	13370	0.10%	630	0.05%
Min Nan (Chaochow; Teochow; Fukien; Taiwanese)	5775	0.04%	625	0.05%
Japanese	6040	0.04%	570	0.04%
German	37255	0.28%	515	0.04%
Malay	1810	0.01%	475	0.03%
Sign languages	4425	0.03%	460	0.03%
Kannada	1060	0.01%	430	0.03%
Yoruba	1300	0.01%	425	0.03%
Wu (Shanghainese)	3690	0.03%	395	0.03%
Ilocano	4100	0.03%	375	0.03%
Cebuano	2325	0.02%	345	0.02%
Czech	3070	0.02%	340	0.02%
Maltese	1090	0.01%	330	0.02%
Slovak	3520	0.03%	330	0.02%
Armenian	8630	0.06%	315	0.02%
Lao	2535	0.02%	305	0.02%
2. Multiple Responses	790825	5.88%	173000	12.52%

Note: Excludes census undercount.

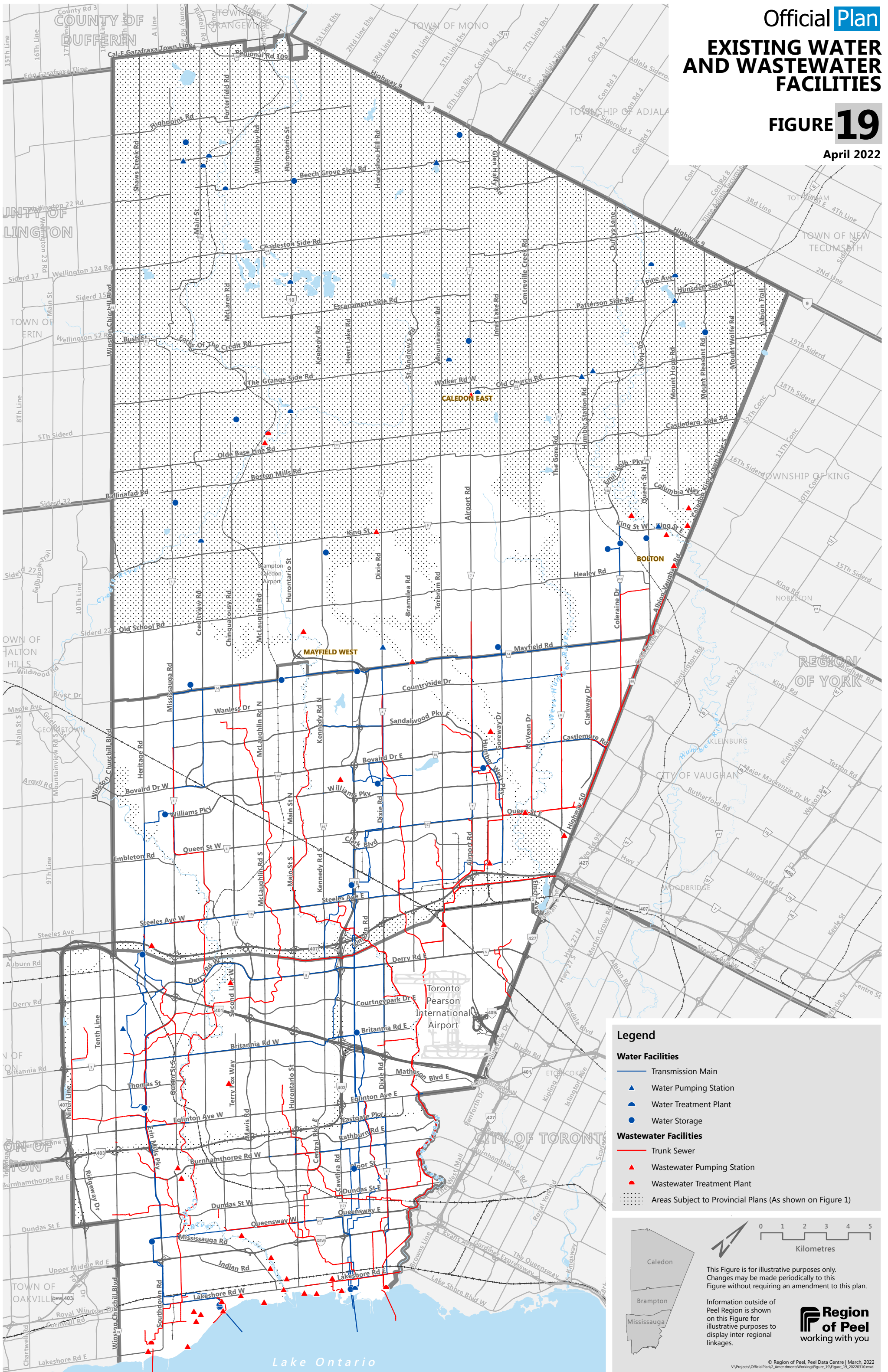
Sum of individual variables may not add up to totals due to rounding.

This Figure is for illustrative purposes only. Changes may be made periodically to this Figure without requiring an amendment to this Plan.

EXISTING WATER AND WASTEWATER FACILITIES

FIGURE 19

April 2022



Legend

Water Facilities

- Transmission Main
- Water Pumping Station
- Water Treatment Plant
- Water Storage

Wastewater Facilities

- Trunk Sewer
- Wastewater Pumping Station
- Wastewater Treatment Plant
- Areas Subject to Provincial Plans (As shown on Figure 1)

0 1 2 3 4 5
Kilometres

This Figure is for illustrative purposes only. Changes may be made periodically to this Figure without requiring an amendment to this plan.

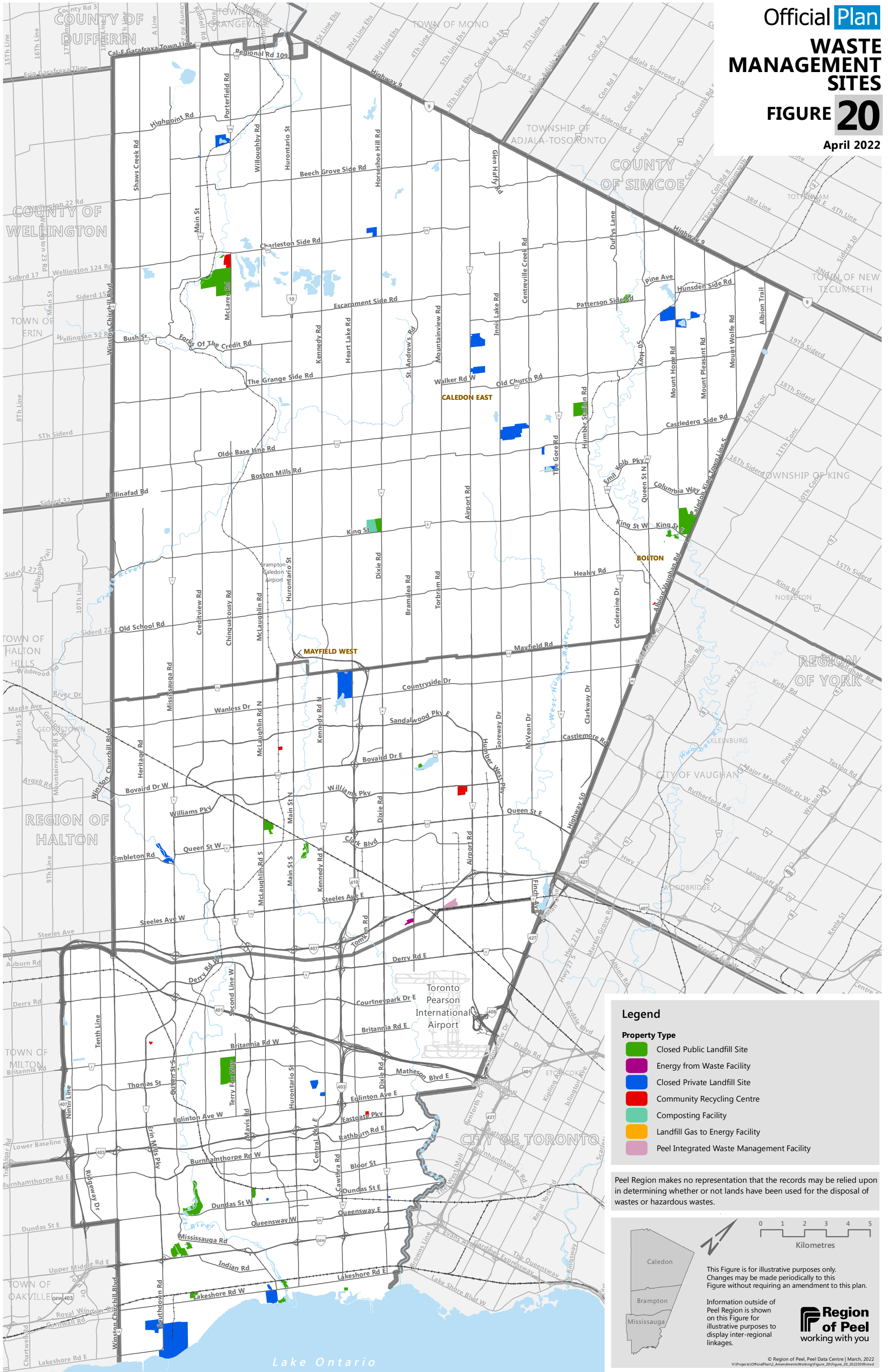
Information outside of Peel Region is shown on this Figure for illustrative purposes to display inter-regional linkages.

Region of Peel
working with you

WASTE MANAGEMENT SITES

FIGURE 20

April 2022



Legend

Property Type

- Closed Public Landfill Site
- Energy from Waste Facility
- Closed Private Landfill Site
- Community Recycling Centre
- Composting Facility
- Landfill Gas to Energy Facility
- Peel Integrated Waste Management Facility

Peel Region makes no representation that the records may be relied upon in determining whether or not lands have been used for the disposal of wastes or hazardous wastes.

This Figure is for illustrative purposes only. Changes may be made periodically to this Figure without requiring an amendment to this plan.

Information outside of Peel Region is shown on this Figure for illustrative purposes to display inter-regional linkages.